



Easi-Scope

Magnifies specimens up to 41x on a 17" computer monitor

Warranty & Support

This product is provided with a one year warranty for problems found during normal usage. Mistreating the Easi-Scope or opening the unit will invalidate this warranty.

All out of warranty repairs will be subject to a replacement fee.

Technical Support

Please visit www.tts-group.co.uk for the latest product information.

Email feedback@tts-group.co.uk for technical support.

TTS Group Ltd.
Park Lane Business Park
Kirkby-in-Ashfield
Nottinghamshire,
NG17 9GU, UK.

Freephone: 0800 318686 Freefax: 0800 137525



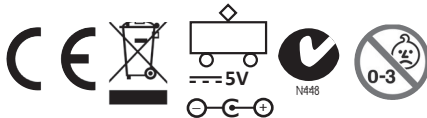
USER GUIDE

www.tts-shopping.com

Easi-Scope

WARNING: Do not dispose of this product in household waste. Hand it over to a collection point for recycling electronic appliances.

WARNING! Not suitable for children under 36 months due to small parts – choking hazard. Made in China, on behalf of the TTS Group Ltd.



TTS Group Ltd.,
Park Lane Business Park,
Kirkby-in-Ashfield,
Nottinghamshire,
NG17 9GU, UK

TTS Product Code:
EL00015

Table of Contents

Important information	2	Focusing	6
Care and maintenance	2	Using the software	7
Warning	3	System settings menu	7
Product description	3	Device setup	8
Computer requirements	3	Timed shot setup	8
Package contents	6	Movie setup	8
Product overview	4	Save setting	8
Product specification ⁴		Language setting	8
Software installation	5	Advanced settings	8
Getting started	5	Saved files	9
Connecting the device	5	Uninstalling the software	9
Starting the software	6	Legal information	9

Important information

Please read this instruction manual carefully before using this product, and retain these instructions for future reference.

Improvements and changes to this text necessitated by typographical errors, or improvements to the software and/or equipments may be made at any time without notice.

Warning

Do not shine the Digital Microscope's LEDs in the eye, doing so may cause permanent eye damage.

Product description

This product is a USB powered device which magnifies specimens up to 41x on a 17" computer monitor.

Snapshot of the specimens can be captured using the shutter button located on the top of the device. Video recording is also available.

Care and maintenance

- Keep the device dry and protect it from water or vapour.
- Do not leave your device in a place with an extreme high or low temperature.
- Do not touch the device with a wet hand as it may damage the device, or cause an electric shock to the user.
- Do not use or store the device in dusty, dirty areas as its moving parts may be damaged.
- Do not use harsh chemicals, cleaning solvents or strong detergents to clean the device. Wipe it with a soft cloth slightly dampened in a mild soap-and-water solution.

Computer requirements

Windows based PC

Compatible operating systems

Windows XP SP2, SP3
 Windows Vista (32 bit or 64 bit)
 Windows 7 (32 bit or 64 bit)
 Windows 8 (32 bit or 64 bit)

CPU Speed P4-1.8GHz or above
 RAM 512 MB or above
 Hard disk 800 MB or above
 USB USB 2.0

Mac OS based PC

Compatible operating systems

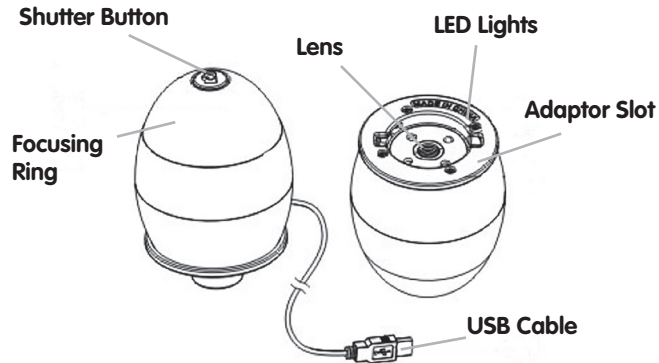
Mac OS X 10.4.8 - Mac OS X 10.8.1

CPU Power PC G3/G4/G5 or Intel based

RAM 128 MB or above
 Hard disk 800 MB or above

USB USB 2.0

Product overview




Product specification



Connection type	USB 2.0
Effective magnification	14" monitor - 34x 17" monitor - 41x
Effective viewing area	8mm x 6mm
Illumination	Four LED array
Sensor	CMOS
Sensor resolution	680 x 480 pixels (VGA)
Size	75mm x 50mm x 50mm
Weight	133 grams

Software installation

Windows based PC

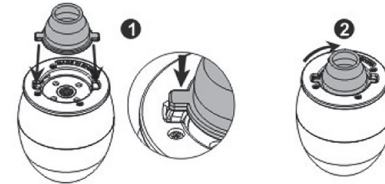
1. Insert the supplied application CD to the CD-ROM of the computer 
2. Double click the "Digital Viewer.exe" icon located within the CD.
3. Follow the Digital Viewer setup wizard to install the software and drivers for the Digital Microscope.

Mac OS based PC

1. Insert the supplied application CD to the CD-ROM of the computer.
2. Double click the "Digital Viewer.dmg" icon located within the CD. 
3. Drag the Digital Viewer icon into the Applications folder. 

Getting started

Assembling the product



Insert one of the adaptors into the adaptor slot, and fasten it by turning it gently in the clockwise direction.

Connecting the device

Connect the device to a USB socket of the computer.

Starting the Digital Viewer software

Windows based PC

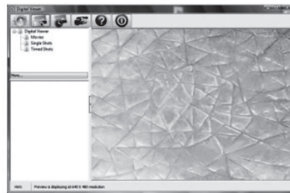
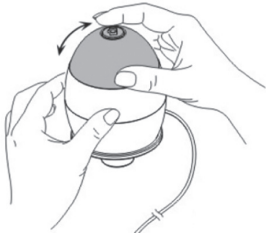
The Digital Viewer software can be launched by double clicking the Digital Viewer icon from the desktop, or from the start menu (Start > All Programs > Digital Viewer > Digital Viewer).

Mac OS based PC

The Digital Viewer software can be launched by double clicking the Digital Viewer icon from the Applications menu.

Focusing

Adjust the focus of the image manually by rotating the focusing ring.



Using the Digital Viewer software

The following buttons are available:



Clicking this will open the system settings menu (see next section).



Clicking this will capture the on screen image of the device.



Clicking this will activate or deactivate the timed shot feature. When activated, images will be captured at a regular interval.



Clicking this will activate or deactivate the video recording feature.



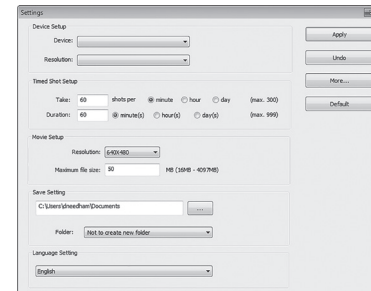
Clicking this will show the copyright and version information of the application software.



Clicking this will shut down the application software.

System settings menu

The first time the Digital Viewer is opened, the default settings will be loaded, you may change these settings manually in the system settings menu.



Device setup

If the image captured by the Digital Microscope was not displayed by default, you can change this by selecting it from the "Device" drop-down menu.

The resolution of images you capture can be changed from the "Resolution" drop-down menu.

Timed shot setup

The frequency and duration of automatic images capture can be adjusted under this option.

Movie setup

The resolution of videos you record can be changed from the "Resolution" menu. You can also set a maximum file size for each video.

Save setting

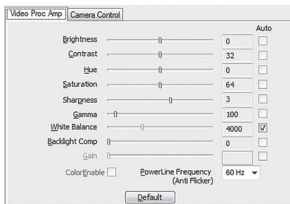
The default location for captured images or videos can be changed under this option.

Language setting

The language of the Digital Viewer software can be changed under this option.

Advanced settings

By clicking the "More..." button on the right of the system settings menu, you will be able to manually adjust all of the image settings. Note that the settings available may be different, depending on your operating system.



Saved files

With the Digital Viewer application software opened, you can locate the saved files folder by clicking the "More..." button located on the left of the main software window.

Full screen

To activate the full screen mode, click the full screen button located on the bottom right hand corner of the Digital Viewer application software window.

To exit full screen mode, either double click on the screen, or press the "Esc" button on the keyboard.

Uninstalling the Digital Viewer software

Windows based PC

Select "Uninstall Digital Viewer" from the start menu (Start > All Programs > Digital Viewer > Uninstall Digital Viewer).

Mac OS based PC

Drag the Digital Viewer application icon from the "Applications" folder to "Trash".

Legal information

This document is published without any warranty. While the information provided is believed to be accurate, it may include errors or inaccuracies. In no event shall the manufacturer or its distributors be liable for incidental or consequential damages of any nature, including but not limited to loss of profits or commercial loss, arising out of the use of the information in this document.

Intel is a trademark of Intel Corp. in the U.S. and other countries. Mac, Mac OS and OS X are trademarks of Apple Inc., registered in the U.S. and other countries. PowerPC™ and the PowerPC logo™ are trademarks of International Business Machines Corporation, used under license therefrom. Windows is a registered trademark of Microsoft Corporation in the United States and other countries.