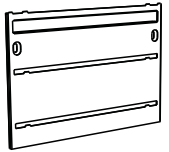

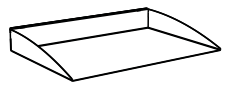
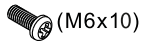

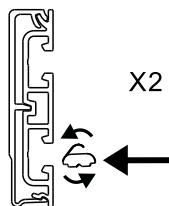


In order to achieve a correct mounting of Triple-Tray console, you are advised to read and follow the instructions step by step. If there are incomprehensible steps, please let us know and we will get back to you.

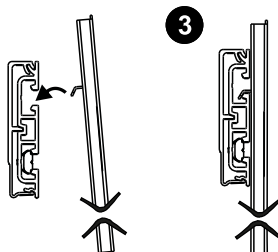
Part Check-List

①		X1	③		X2
		X3	④		X2
			⑤		X1

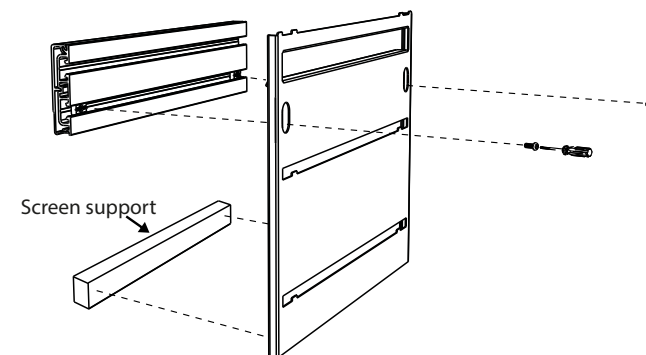
- ① Place the sliding nuts ③ approximately 300 mm apart. Push them into the toolbar T-slot, then turn to make the spring face away from you.



- ② Hook the hanger ① to the upper toolbar T-slot. Leave hanging.



- ④ Align the screw holes of the sliding nuts ③ with each respective hole of the hanger ①. Once aligned and hooked, mount the screws.



- ⑤ Attach the shelves ② to the hanger ① starting from the bottom. Fit the holes with the flaps of the hanger and repeat until fully assembled.

